

SUGGESTED EROSION AND SEDIMENT CONTROL SEQUENCE OF CONSTRUCTION

1. NOTIFY THE DISTRICT DEPARTMENT OF ENVIRONMENT (DDOE) TO HOLD A PRE-CONSTRUCTION MEETING AT (202) 536- 2977. NOTIFY DDOE AT LEAST 72 HOURS BEFORE COMMENCING ANY DISTURBING ACTIVITY.
2. INSTALL SAFETY FENCE AROUND CONSTRUCTION AREA IF NECESSARY.
3. INSTALL SILT FENCES, AND INLET PROTECTIONS. NOTIFY DDOE SEDIMENT CONTROL INSPECTOR AND OBTAIN APPROVAL BEFORE PROCEEDING FURTHER.
4. PROVIDE SUMP PIT AND FILTER BAG AS NEEDED FOR TRENCHING AND EXCAVATION WORK.
5. BEGIN UTILITY CONSTRUCTION AND EXCAVATION CONTRACTOR SHALL NOT OPEN MORE THAN 500 LINEAR FEET OF TRENCH AT ANY ONE TIME.
6. SWEEP CLEAN CONSTRUCTION AREA BY THE END OF EACH DAY.
7. INSTALL PERMANENT SEEDING FOR STABILIZATION IN ALL OTHER DISTURBED AREAS. DURING WINTER.
8. BEGIN GRADING OF THE ROADS AS NECESSARY.
9. BEGIN PAVEMENT RESTORATION. PRIOR TO FINALIZING THE RESTORATION, REMOVE CURB INLET PROTECTION ONLY.
10. AFTER ALL FINAL PLANTING, SEEDING, AND OTHER PERMANENT STABILIZATION IS COMPLETE, CONSTRUCT CURB CUTS
11. AT THE END OF CONSTRUCTION, FINISH GRADE TO MAINTAIN SMOOTH SURFACE AND POSITIVE DRAINAGE. ONCE SURROUNDING STAGING AREAS ARE FULLY STABILIZED. REMOVE THE REMAINDER OF THE SEDIMENT AND EROSION CONTROL MEASURES.

STANDARD AND SPECIFICATIONS FOR DUST CONTROL

1. THE CONTRACTOR SHALL CONDUCT OPERATION AND MAINTAIN THE PROJECT SITE SO AS TO MINIMIZE THE CREATION AND DISPERSION OF DUST. DUST CONTROL SHALL BE USED THROUGH THE WORK AT THE SITE.
2. THE CONTRACTOR MUST PROVIDE CLEAN WATER, FREE FROM SALT , OIL, AND OTHER DELETERIOUS MATERIAL TO BE USED FOR ON-SITE DUST CONTROL.
3. THE CONTRACTOR SHALL SUPPLY WATER SPRAYING EQUIPMENT CAPABLE OF ACCESSING ALL WORK AREAS.
4. THE CONTRACTOR SHALL IMPLEMENT STRICT DUST CONTROL MEASURES DURING ACTIVE CONSTRUCTION PERIODS ON-SITE. THESE CONTROL MEASURE WILL GENERALLY CONSIST OF WATER APPLICATIONS THAT SHALL BE APPLIED A MINIMUM OF ONCE PER DAY DURING DRY WEATHER OR MORE OFTEN AS REQUIRED TO PREVENT DUST EMISSIONS.
5. THE WATER APPLICATION TO UNDISTURBED SOILS SURFACES, THE CONTRACTOR SHALL:
  - A. APPLY WATER WITH EQUIPMENT CONSISTING OF TANK, SPRAY BAR, PUMP WITH DISCHARGE PRESSURE GAUGE.
  - B. ARRANGE THE SPRAY BAR HEIGHT, NOZZLE SPACING, AND SPRAY PATTERN TO PROVIDE COMPLETE COVERAGE OF THE GROUND WITH WATER.
  - C. DISPERSE WATER THROUGH NOZZLES ON SPRAY BAR AT 20 PSI (137.8 KPA), MINIMUM . KEEP AREAS DAMP WITHOUT CREATING NUISANCE CONDITIONS SUCH AS PONDING.
6. FOR WATER APPLICATION SOIL SURFACE DURING DEMOLITION AND/OR EXCAVATION, THE CONTRACTOR SHALL:
  - A. APPLY WATER WITH EQUIPMENT CONSISTING OF TANK, PUMP WITH DISCHARGE PRESSURE GAUGE, HOSES AND MIST NOZZLES.
  - B. LOCATE THE TANK AND SPRAYING EQUIPMENT SO THAT THE ENTIRE EXCAVATION AREA CAN BE MISTED WITHOUT INTERFERING WITH DEMOLITION AND/OR EXCAVATION EQUIPMENT OR OPERATIONS. KEEP AREAS DAMP WITHOUT CREATING NUISANCE CONDITIONS SUCH AS PONDING.
  - C. APPLY WATER SPRAY IN A MANNER TO PREVENT MOVEMENT OF SPRAY BEYOND THE SITE BOUNDARIES.

DDOE SOIL EROSION AND SEDIEMNT CONTROL PLAN GENERAL NOTES

1. FOLLOWING INITIAL LAND DISTURBANCE OR RE-DISTURBANCE, PERMANENT OR INTERIM STABILIZATION MUST BE COMPLETED WITHIN SEVEN (7) CALENDAR DAYS FOR THE SURFACES OF ALL PERIMETER CONTROLS, DIKES, SWALES, DITCHES, PERIMETER SLOPES, AND SLOPES GREATER THAN THREE (3) HORIZONTAL TO ONE (1) VERTICAL (3:1); AND FOURTEEN (14) DAYS FOR ALL OTHER DISTURBED OR GRADED AREAS ON THE PROJECT SITE. THESE REQUIREMENTS DO NOT APPLY TO AREAS SHOWN ON THE PLAN THAT ARE USED FOR MATERIAL STORAGE OTHER THAN STOCKPILING, OR FOR THOSE AREAS ON THE PLAN WHERE ACTUAL CONSTRUCTION ACTIVITIES ARE BEING PERFORMED. MAINTENANCE SHALL BE PERFORMED AS NECESSARY SO THAT STABILIZED AREAS CONTINUOUSLY MEET THE APPROPRIATE REQUIREMENTS OF THE DISTRICT OF COLUMBIA STANDARDS AND SPECIFICATIONS FOR SOIL EROSION AND SEDIMENT CONTROL (ESC). [21 DCMR § 542.9 (0)]
2. ESC MEASURES SHALL BE IN PLACE BEFORE AND DURING LAND DISTURBANCE. [21 DCMR § 543.6]
3. CONTACT DDOE INSPECTION (202) 535-2977 TO SCHEDULE A PRECONSTRUCTION MEETING AT LEAST THREE (3) BUSINESS DAYS BEFORE THE COMMENCEMENT OF A LAND-DISTURBING ACTIVITY. [21 DCMR § 503.7 (A)]
4. A COPY OF THE APPROVED PLAN SET WILL BE MAINTAINED AT THE CONSTRUCTION SITE FROM THE DATE THAT CONSTRUCTION ACTIVITIES BEGIN TO THE DATE OF FINAL STABILIZATION AND WILL BE AVAILABLE FOR DDOE INSPECTORS. [21 DCMR § 542.15]
5. ESC MEASURES SHALL BE IN PLACE TO STABILIZE AN EXPOSED AREA AS SOON AS PRACTICABLE AFTER CONSTRUCTION ACTIVITY HAS TEMPORARILY OR PERMANENTLY CEASED BUT NO LATER THAN FOURTEEN (14) DAYS FOLLOWING CESSATION, EXCEPT THAT TEMPORARY OR PERMANENT STABILIZATION SHALL BE IN PLACE AT THE END OF EACH DAY OF UNDERGROUND UTILITY WORK THAT IS NOT CONTAINED WITHIN A LARGER DEVELOPMENT SITE. [21 DCMR § 543.7]
6. STOCKPILED MATERIAL BEING ACTIVELY USED DURING A PHASE OF CONSTRUCTION SHALL BE PROTECTED AGAINST EROSION BY ESTABLISHING AND MAINTAINING PERIMETER CONTROLS AROUND THE STOCKPILE. [21 DCMR § 543.16 (A)]
7. STOCKPILED MATERIAL NOT BEING ACTIVELY USED OR ADDED TO SHALL BE STABILIZED WITH MULCH, TEMPORARY VEGETATION, HYDRO-SEED OR PLASTIC WITHIN FIFTEEN (15) CALENDAR DAYS AFTER ITS LAST USE OR ADDITION. [21 DCMR § 543.16 (B)]
8. PROTECT BEST MANAGEMENT PRACTICES FROM SEDIMENTATION AND OTHER DAMAGE DURING CONSTRUCTION FOR PROPER POST CONSTRUCTION OPERATION. [21 DCMR § 543.5]
9. REQUEST A DDOE INSPECTOR'S APPROVAL AFTER THE INSTALLATION OF PERIMETER EROSION AND SEDIMENT CONTROLS, BUT BEFORE PROCEEDING WITH ANY OTHER EARTH DISTURBANCE OR GRADING. [21 DCMR § 542.12 (A)]
10. REQUEST A DDOE INSPECTOR'S APPROVAL AFTER FINAL STABILIZATION OF THE SITE AND BEFORE THE REMOVAL OF EROSION AND SEDIMENT CONTROLS. [21 DCMR § 542.12 (B)]
11. FINAL STABILIZATION MEANS THAT ALL LAND-DISTURBING ACTIVITIES AT THE SITE HAVE BEEN COMPLETED AND EITHER OF THE FOLLOWING TWO CRITERIA HAVE BEEN MET: (1) A UNIFORM (FOR EXAMPLE, EVENLY DISTRIBUTED, WITHOUT LARGE BARE AREAS) PERENNIAL VEGETATIVE COVER WITH A DENSITY OF SEVENTY PERCENT (70%) OF THE NATIVE BACKGROUND VEGETATIVE COVER FOR THE AREA HAS BEEN ESTABLISHED ON ALL UNPAVED AREAS AND AREAS NOT COVERED BY PERMANENT STRUCTURES, OR (2) EQUIVALENT PERMANENT STABILIZATION MEASURES HAVE BEEN EMPLOYED (SUCH AS THE USE OF RIPRAP, GABIONS, OR GEOTEXTILES). [21 DCMR § 542.12 (B.1, B.2)]
12. FOLLOW THE REQUIREMENTS OF THE UNITED STATES ENVIRONMENTAL PROTECTION AGENCY APPROVED STORMWATER POLLUTION PREVENTION PLAN (SWPPP) AND MAINTAIN A LEGIBLE COPY OF THIS SWPPP ON SITE. [21 DCMR § 543.10 (B)]
13. POST A SIGN THAT NOTIFIES THE PUBLIC TO CONTACT DDOE IN THE EVENT OF EROSION OR OTHER POLLUTION. THE SIGN WILL BE PLACED AT EACH ENTRANCE TO THE SITE OR AS DIRECTED BY THE DDOE INSPECTOR. EACH SIGN WILL BE NO LESS THAN 18 X 24 INCHES IN SIZE AND MADE OF MATERIALS THAT WILL WITHSTAND WEATHER FOR THE DURATION OF THE PROJECT. LETTERING WILL BE AT LEAST 1 INCH IN HEIGHT AND EASILY READABLE BY THE PUBLIC FROM A DISTANCE OF TWELVE FEET (12 FT). THE SIGN MUST DIRECT THE PUBLIC, IN SUBSTANTIALLY THE FOLLOWING FORM: 'TO REPORT EROSION, RUNOFF, OR STORMWATER POLLUTION' AND WILL PROVIDE THE CONSTRUCTION SITE ADDRESS, DDOE'S TELEPHONE NUMBER (202-535-2977), DDOE'S E-MAIL ADDRESS (IEB.SCHEDULING@DC.GOV), AND THE 311 MOBILE APP HEADING ('CONSTRUCTION-EROSION RUNOFF'). [21 DCMR § 543.22] IF A SITE DISTURBS 5,000 SQUARE FEET OF LAND OR GREATER, THE ESC PLAN MUST CONTAIN THE FOLLOWING STATEMENT:
14. A RESPONSIBLE PERSON MUST BE PRESENT OR AVAILABLE WHILE THE SITE IS IN A LAND-DISTURBING PHASE. THE RESPONSIBLE PERSON IS CHARGED WITH BEING AVAILABLE TO (A) INSPECT THE SITE AND ITS ESC MEASURES AT LEAST ONCE BIWEEKLY AND AFTER A RAINFALL EVENT TO IDENTIFY AND REMEDY EACH POTENTIAL OR ACTUAL EROSION PROBLEM, (B) RESPOND TO EACH POTENTIAL OR ACTUAL EROSION PROBLEM IDENTIFIED BY CONSTRUCTION PERSONNEL, AND (C) SPEAK ON SITE WITH DDOE TO REMEDY EACH POTENTIAL OR ACTUAL EROSION PROBLEM. A RESPONSIBLE PERSON SHALL BE (A) LICENSED IN THE DISTRICT OF COLUMBIA AS A CIVIL OR GEOTECHNICAL ENGINEER, A LAND SURVEYOR, OR ARCHITECT; OR (B) CERTIFIED THROUGH A TRAINING PROGRAM THAT DDOE APPROVES, INCLUDING A COURSE ON EROSION CONTROL PROVIDED BY ANOTHER JURISDICTION OR PROFESSIONAL ASSOCIATION. DURING CONSTRUCTION, THE RESPONSIBLE PERSON SHALL KEEP ON SITE PROOF OF PROFESSIONAL LICENSING OR OF SUCCESSFUL COMPLETION OF A DDOE-APPROVED TRAINING PROGRAM. [21 DCMR § 547]



STANDARD SYMBOLS	
EARTH DIKE	STANDARD SYMBOL A - 2/ B - 3
SPALE	STANDARD SYMBOL A - 2/ B - 3
PERIMETER DIKE/SPALE	STANDARD SYMBOL [Symbol]
PPE SLOPE DRAIN	STANDARD SYMBOL [Symbol]
ROCK OUTLET PROTECTION	STANDARD SYMBOL [Symbol]
STONE CHECK DAM	STANDARD SYMBOL [Symbol]
STONE OUTLET STRUCTURE	STANDARD SYMBOL [Symbol]
SILT FENCE	STANDARD SYMBOL [Symbol]
SUPER SILT FENCE	STANDARD SYMBOL [Symbol]
STRAP BALE DIKE	STANDARD SYMBOL [Symbol]

U.S. DEPARTMENT OF AGRICULTURE  
NATURAL RESOURCE CONSERVATION SERVICE

PAGE: 102

WATERWAYS PROTECTION DIVISION  
DISTRICT OF COLUMBIA DEPARTMENT OF HEALTH

STANDARD SYMBOLS	
STANDARD INLET PROTECTION	STANDARD SYMBOL [Symbol]
AT GRADE INLET PROTECTION	STANDARD SYMBOL [Symbol]
CURB INLET PROTECTION	STANDARD SYMBOL [Symbol]
STANDARD INLET PROTECTION	STANDARD SYMBOL [Symbol]
CARBON INFLOW PROTECTION	STANDARD SYMBOL [Symbol]
RP-RAP INFLOW PROTECTION	STANDARD SYMBOL [Symbol]
PUMP PIT	STANDARD SYMBOL [Symbol]
STABILIZED CONSTRUCTION ENTRANCE	STANDARD SYMBOL [Symbol]
PORTABLE PUMPING STATION	STANDARD SYMBOL [Symbol]
REMOVABLE PUMPING STATION	STANDARD SYMBOL [Symbol]

U.S. DEPARTMENT OF AGRICULTURE  
NATURAL RESOURCE CONSERVATION SERVICE

PAGE: 102

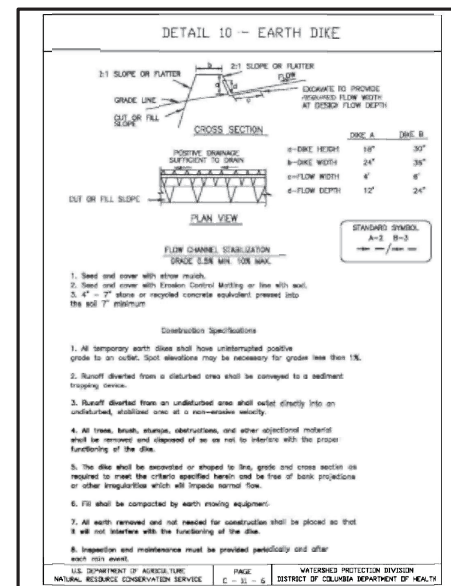
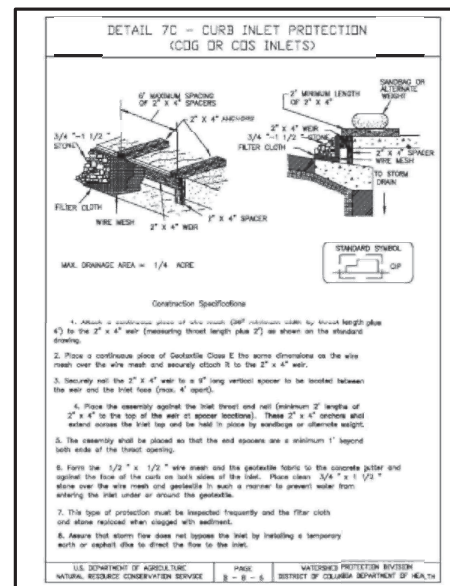
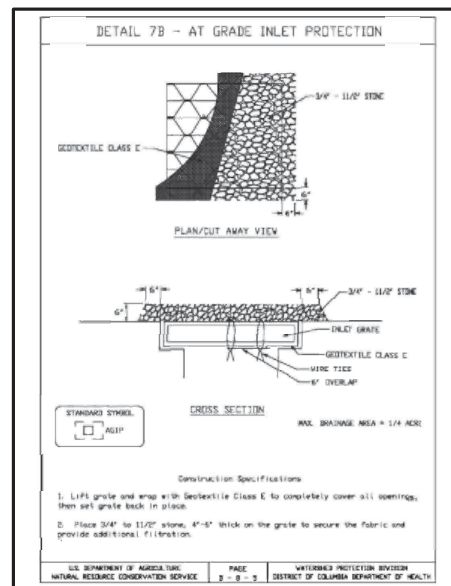
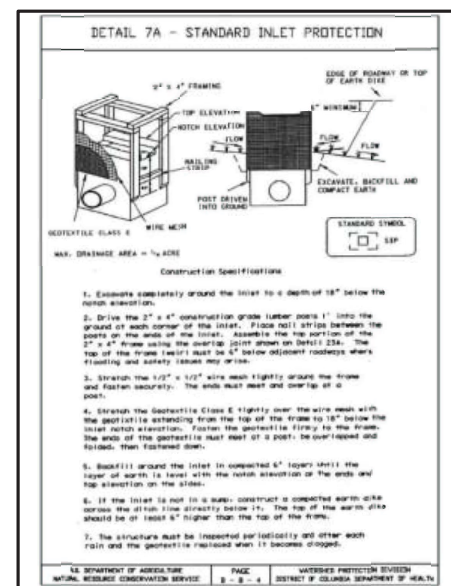
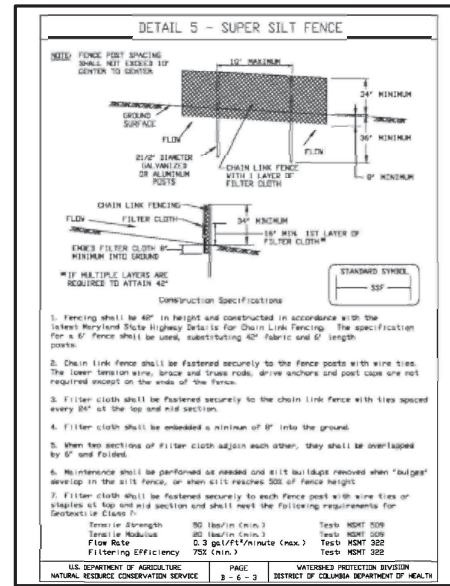
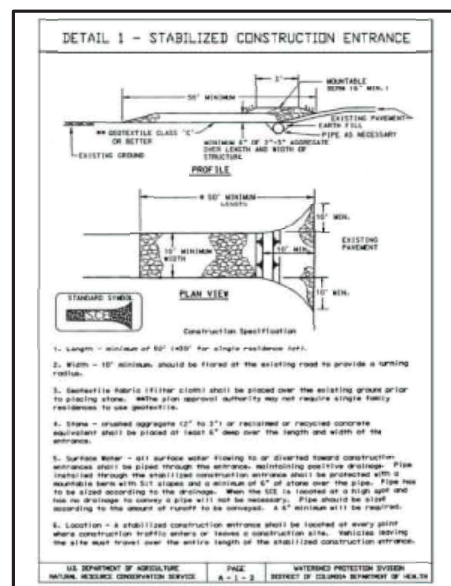
WATERWAYS PROTECTION DIVISION  
DISTRICT OF COLUMBIA DEPARTMENT OF HEALTH

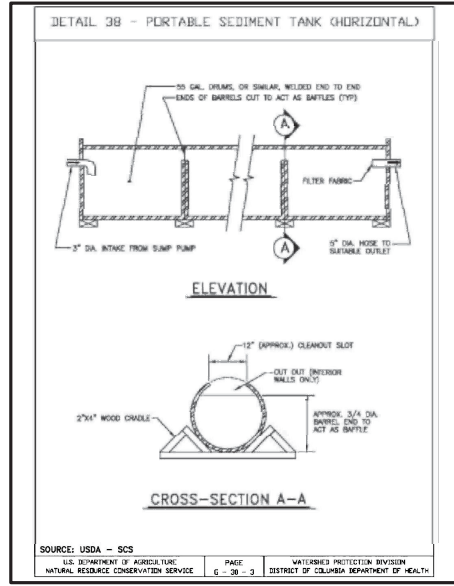
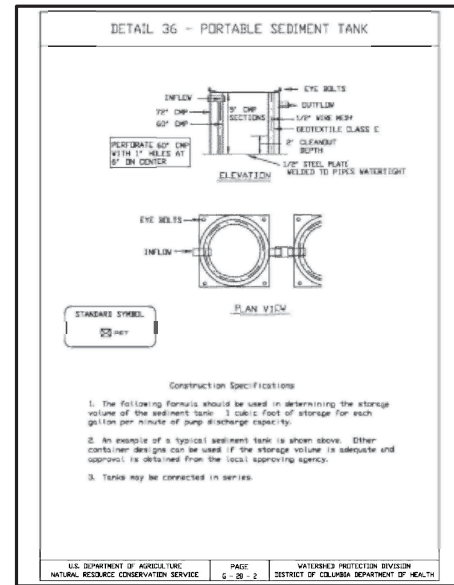
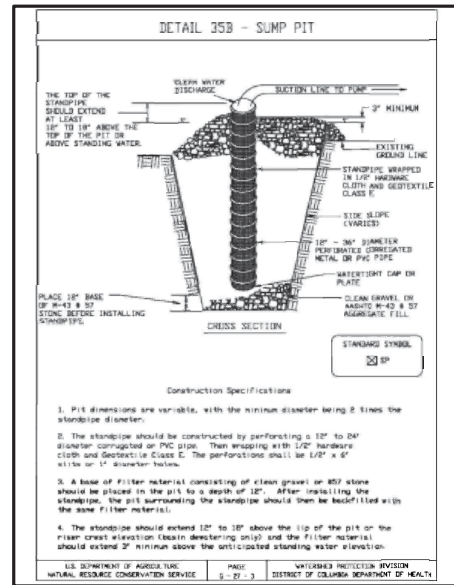
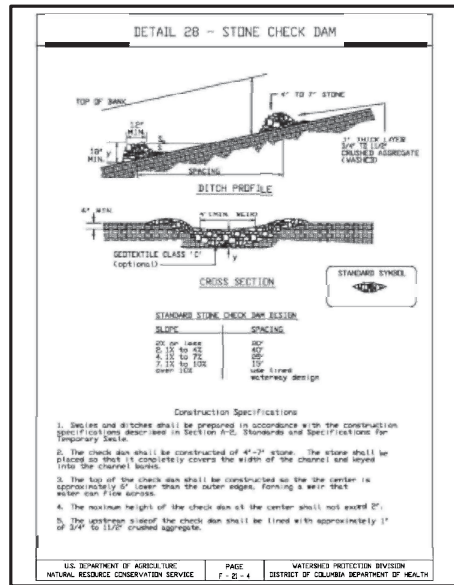
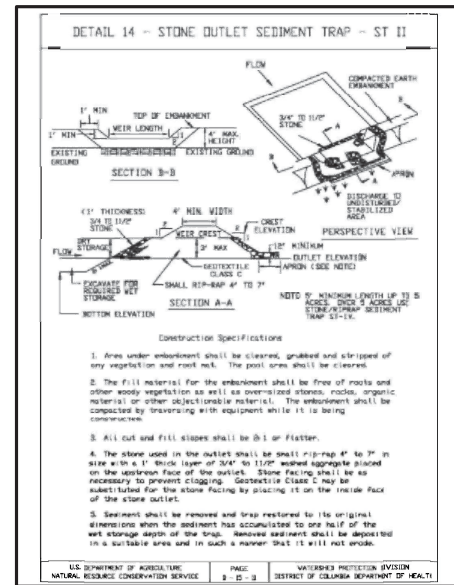
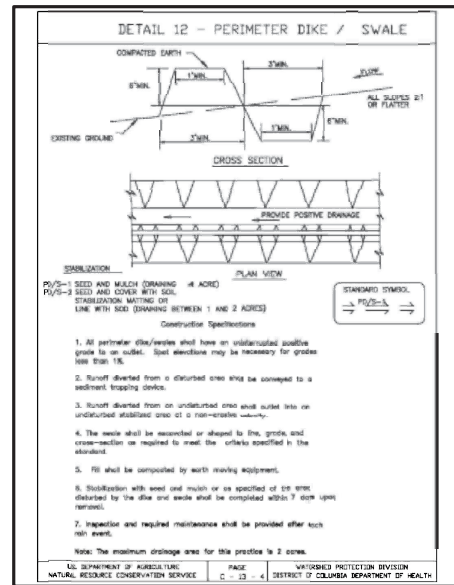
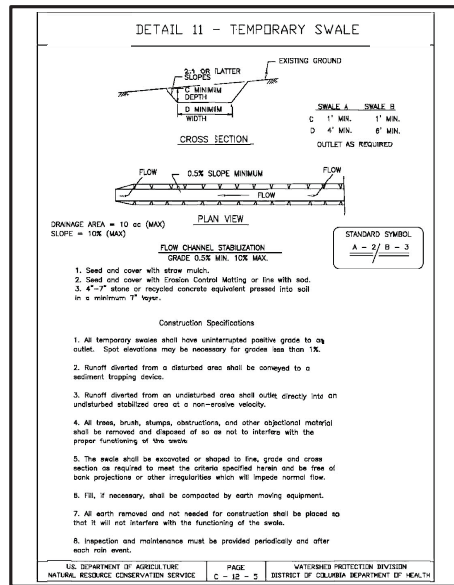
STANDARD SYMBOLS	
EROSION	STANDARD SYMBOL [Symbol]
GRADED SPALE	STANDARD SYMBOL [Symbol]
LINED WATERWAY	STANDARD SYMBOL [Symbol]
SUBSURFACE DRAIN	STANDARD SYMBOL [Symbol]

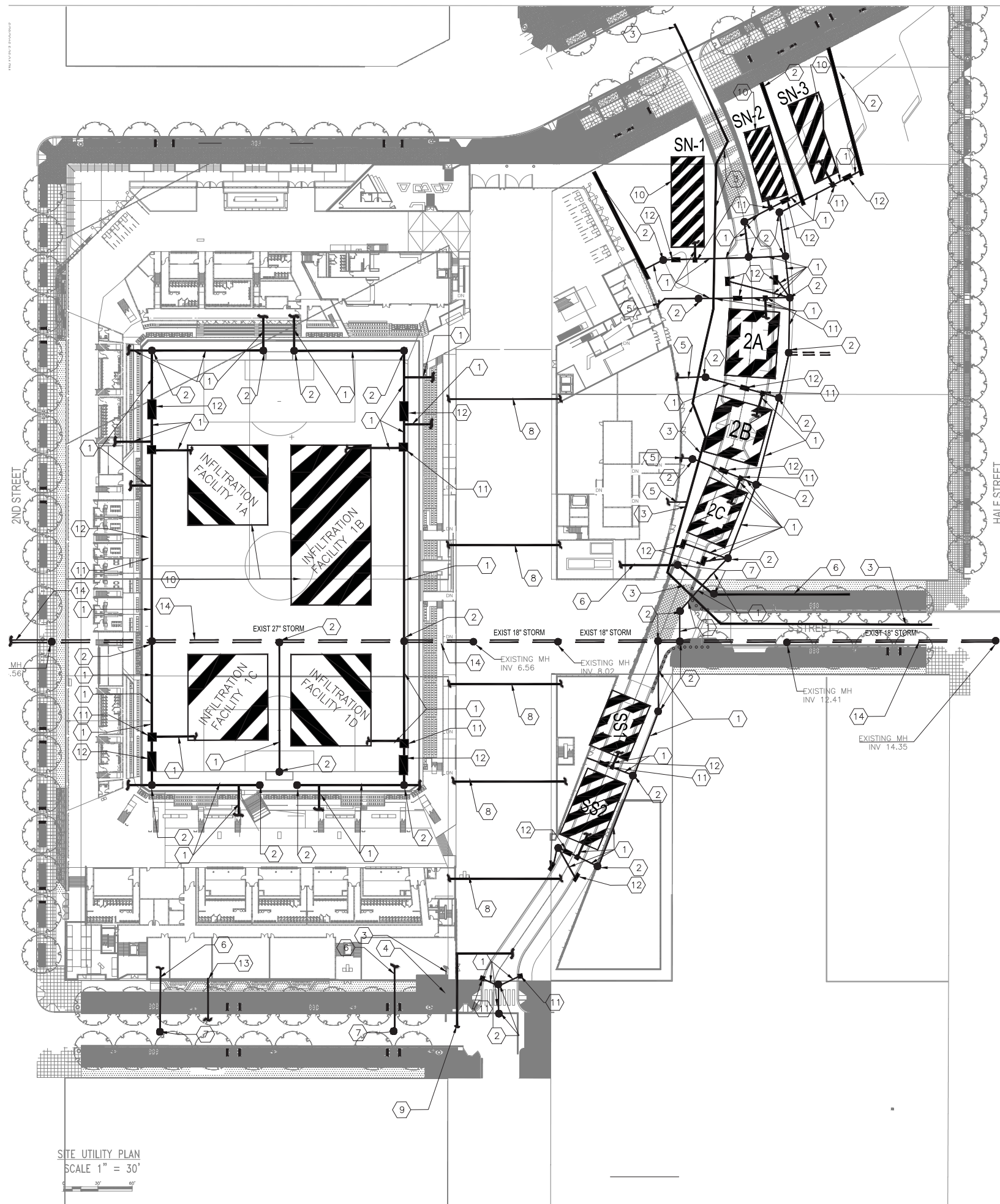
U.S. DEPARTMENT OF AGRICULTURE  
NATURAL RESOURCE CONSERVATION SERVICE

PAGE: 102

WATERWAYS PROTECTION DIVISION  
DISTRICT OF COLUMBIA DEPARTMENT OF HEALTH







R STREET

HALF STREET

**SITE UTILITY LEGEND**

- ① NEW RCP STORM DRAIN LINE
- ② NEW STORM DRAIN MANHOLE/INLET
- ③ NEW DUCTILE IRON WATER LINE
- ④ NEW WATER METER VAULT
- ⑤ NEW DUCTILE IRON FIRE SERVICE LINE
- ⑥ NEW PVC SANITARY SEWER LINE
- ⑦ NEW SANITARY SEWER MANHOLE
- ⑧ NEW CASING PIPE FOR CROSSING OF PEPCO EASEMENT
- ⑨ NEW GAS SERVICE CONNECTION
- ⑩ NEW UNDERGROUND INFILTRATION BASIN
- ⑪ NEW FLOW SPLITTER STRUCTURE
- ⑫ NEW DEBRIS / SCREENING STRUCTURE
- ⑬ NEW ELECTRIC SERVICE CONNECTION
- ⑭ EXISTING STORM DRAIN PIPE TO BE CLEANED AND RELINED

**SITE UTILITY PLAN NOTES**

1. EXISTING UNDERGROUND UTILITY LOCATIONS SHOWN ON THIS PLAN SHOULD BE CONSIDERED APPROXIMATE. THE CONTRACTOR SHALL FIELD LOCATE ALL EXISTING LINES PRIOR TO THE START OF ANY EXCAVATION WORK.
2. ALL UTILITY WORK IN PUBLIC SPACE SHALL BE DONE USING CUT AND COVER CONSTRUCTION. NO OPEN TRENCHES WILL BE PERMITTED TO EXIST IN PUBLIC SPACE OVERNIGHT.
3. FOR MARKING OF UTILITIES IN PUBLIC SPACE, THE CONTRACTOR SHALL CONTACT MISS UTILITY AT 1-800-257-7777 AT LEAST 48 HOURS PRIOR TO THE START OF ANY EXCAVATION OR CONSTRUCTION.
4. THE CONTRACTOR SHOULD TAKE NOTE THAT ONGOING UTILITY RELOCATION AND OTHER CONSTRUCTION WORK BEING DONE BY THE DC DEPARTMENT OF GENERAL SERVICES, PEPCO, VERIZON, AND WASHINGTON GAS IS TAKING PLACE AROUND THE PERIMETER OF THE DC UNITED SITE AS WELL AS ALONG FIRST STREET, SW AS PART OF THE PUBLIC RIGHT OF WAY IMPROVEMENT PACKAGE. COORDINATION WITH THIS ON GOING WORK WILL BE REQUIRED DURING ALL PHASES OF CONSTRUCTION.
5. PIPE BEDDING MATERIAL FOR ALL WET UTILITIES SHALL BE IN ACCORDANCE WITH DC WATER SPECIFICATIONS.
6. THE CONTRACTOR SHALL BE RESPONSIBLE FOR PROVIDING ANY TEMPORARY CONNECTIONS BETWEEN EXISTING AND NEW UTILITY SYSTEMS NECESSARY FOR MAINTAINING SERVICE.
7. ANY EXISTING LINES TO REMAIN THAT ARE DAMAGED BY THE CONTRACTOR SHALL BE REPAIRED IMMEDIATELY AT NO ADDITIONAL COST TO THE OWNER.
8. CLEAR ACCESS TO ALL EXISTING FIRE HYDRANTS MUST BE MAINTAINED AT ALL TIMES.

SITE UTILITY PLAN  
SCALE 1" = 30'